

# S14

## INTELLIGENT MODEL



**MAKE  
EVERY DROP OF  
WATER MORE VALUABLE**

# S14

## RESIDENTIAL ULTRASONIC WATER METER

### LXC 15-20



### APPLICATION

S14 LXC 15-20 Ultrasonic water meter is designed for accurate measurement of cold water consumption in households, apartment buildings, and commercial premises.

- Have more accurate measurements;
- No moving parts design to reduce wear;
- Reliable design supports long-term stable operation;
- The water consumption value can still be accurately obtained at a low flow rate of 3L/h;
- Record total volume as small as 1mL;
- 9 digits LCD. Total volume and instantaneous flow rate indication;
- Low power consumption circuit board design extends service life up to 10 years;
- Ready for AMR with wired and wireless communication technologies.

### AMR READY

- Wired: RS485 modbus;
- Wired: Pulse;
- Wireless: LoRa, LoRaWAN (EU863-870, AS923, AU915-928, US902-928, IN865-867 channel plans);
- Wireless: NB-IoT (CoAP);
- Wireless: GPRS(2G/4G);
- Infrared reading.

### TECHNICAL FEATURES

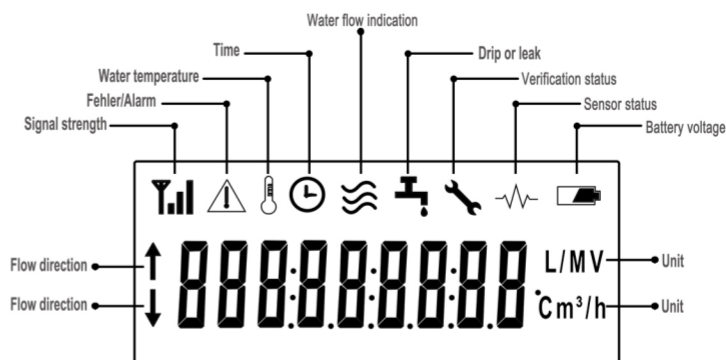
- No measurement of air;
- Nominal flow 2.5/4.0 m<sup>3</sup>/h;
- Q3/Q1 = R400/800 (optional);
- Supports installation at any position or angle;
- IP68 suitable for outdoor installations;
- Temperature class T30, T50, T70(customizable);
- Environment class E1/M1;
- Nominal pressure PN16;
- Bi-directional flow measurements;
- U5/D3, straight pipe sections required before or after the meter;
- Copper or stainless steel body;
- Display with error and alarm codes including leakage detection.

### WIRELESS AMR INTERFACES



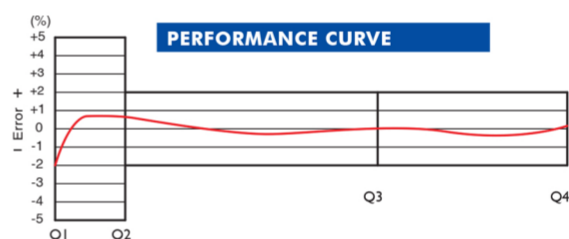
## LCD INDICATIONS AND ALARMS

- Flow direction;
- Signal strength;
- Fehler/Alarm;
- Water temperature;
- Time;
- Water flow indication;
- Drip or leak;
- Verification;
- Sensor status
- Battery voltage
- Unit

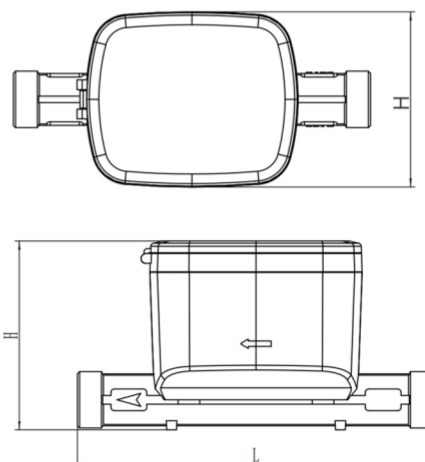


## TECHNICAL FEATURES

Nominal diameter	mm		15	20		
Overload flow rate	Q4	m³/h	3,125	5		
Nominal flow	Q3	m³/h	2,5	4		
Transitional flow	Q2	L/h	10	5	16	8
Min flow	Q1	L/h	6.25	3.125	10	5
Measuring range	Q3/Q1		R400	R800	R400	R800
Minimum reading	mL		999.999999			
Max reading	L		999999.999			
Power supply	V		Built-in lithium battery DC 3.6V			



Caliber	Unit	DN15	DN20
L	mm	165	195
L1	mm	260	300
W	mm	81	81
H	mm	90	95
Meter thread		G $\frac{3}{4}$ B	G1B
Connecting Pipe thread (D)		R $\frac{1}{2}$	R $\frac{3}{4}$



**Make every drop of water more valuable**

